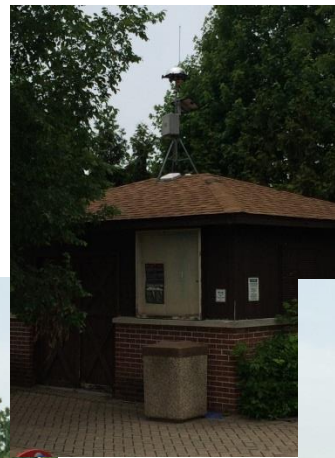
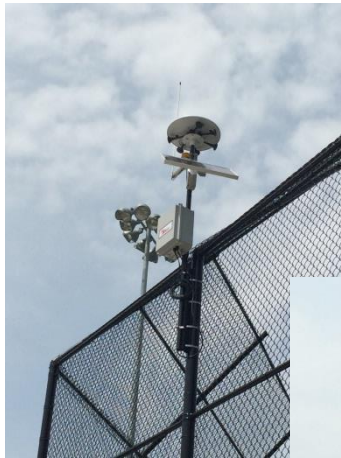




**Winnetka Park District**  
540 Hibbard Road  
Winnetka, IL 60093



# Inclement Weather & Thor Guard Lightning Prediction System Overview





## Winnetka Park District

540 Hibbard Road  
Winnetka, IL 60093



### How It Works

- The Thor Guard Lightning Prediction System is a proactive solution for lightning safety.

### Thor Guard Is Located

- Skokie Playfields (Field 1 Backstop)
- Winnetka Golf Club
- Duke Childs
- Nick Corwin Park (On Shed)

### Operational Statistics

- The system has a coverage area radius of 3 miles
- System operates seven days per week, from March 1st- November 30th
- Times of operation are 8am-10:30pm



Winnetka Park District

540 Hibbard Road

Winnetka, IL 60093



## When A Threat Is Detected

- The warning horn will sound with an uninterrupted 15-second blast and a strobe light will flash. Once a threat is detected, the system continuously updates weather data.
- *\*If the weather appears to be threatening and no alarm is heard, please leave the park.*
- *\*See slide 6 for response to Thor Guard Detection*



**Winnetka Park District**  
540 Hibbard Road  
Winnetka, IL 60093



## **Appropriate Shelter (At Skokie Playfields)**

- 1<sup>st</sup>-Hard top vehicle (if unavailable proceed to one of the following Park District Shelters)
- 2<sup>nd</sup>-Administration Building (if available)
- 3<sup>rd</sup>-A.C. Nielsen Tennis Center (Front desk will inform patrons where to go)
- 4<sup>th</sup>-Winnetka Ice Arena



# Winnetka Park District

540 Hibbard Road  
Winnetka, IL 60093



## What To Avoid During Lightning Detection

- Elevated ground
- Maintenance machinery
- Open top of soft top vehicles
- Overhead wires/power lines
- Dugouts
- Metal
- Water
- Wire Fences
- Open areas/isolated trees

## Other Non-Covered Locations

- Signal horns may not be at your site, but at a site within ear shot. If you hear the alarm, please leave the park immediately.



# Response to Thor Guard

YOUTH	PARENTS	COACHES
<ul style="list-style-type: none"><li>• Clear fields immediately and seek appropriate shelter</li><li>• Communicate with Coaches and Parents</li><li>• Bring your equipment with you</li><li>• Remain calm and organized when entering a building</li><li>• Make arrangements to be picked up if activities are cancelled</li></ul>	<ul style="list-style-type: none"><li>• Clear fields immediately and seek appropriate shelter</li><li>• Communicate with Coaches and your child</li><li>• If inclement weather exists or is in the forecast, stay on site and refer to the coaches on activities</li><li>• Be "On-Call" to arrange for pickup of your child if activities are cancelled</li><li>• Evaluate the situation - See below for Park District Policy on resuming activities</li></ul>	<ul style="list-style-type: none"><li>• Clear fields immediately and seek appropriate shelter</li><li>• Communicate with Parents and your players</li><li>• Supervise the players on your team</li><li>• Leave goals and/or large equipment on the fields</li><li>• Remain calm and organized when entering a building</li><li>• Evaluate the situation - See below for Park District Policy on resuming activities</li><li>• If activities are cancelled, make sure all players are safely off-site</li></ul>



Winnetka Park District

540 Hibbard Road  
Winnetka, IL 60093



## Practices/Camps/Games

- Wait for the “all clear” signal (3 short bursts) to resume outdoor activities. After 30 minutes of sustained lightning threat and the “all clear” signal hasn’t been sounded camps/games will be cancelled.
- If it clears before the 30 minute time limit and another Thor Guard alert sounds ALL practices/camps/games are cancelled for the evening for the immediate safety of the patrons.

[Winnetka Park District - Lightning System - What you need to know](#)